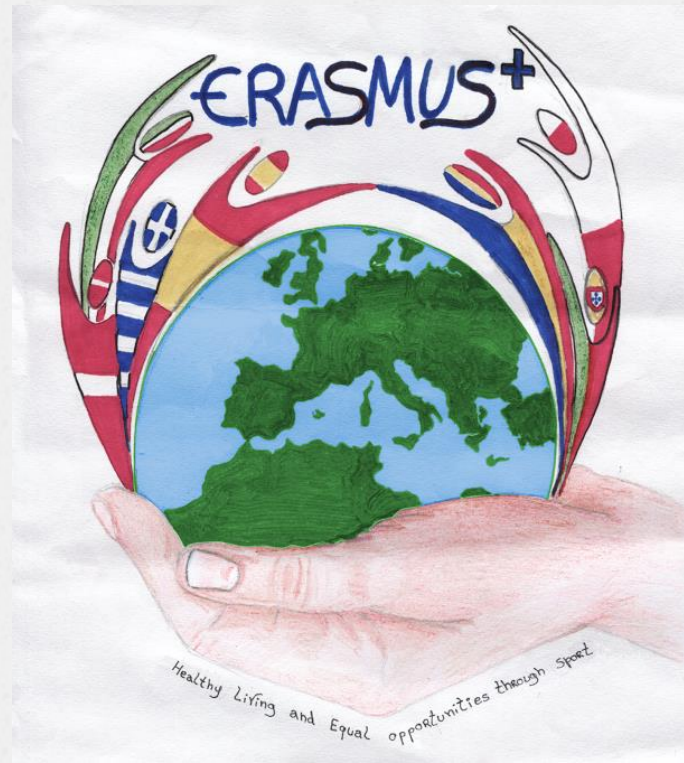


ERASMUS+KA2
“Healthy living
and equal opportunities through sport”





“Research about architectural boundaries in local public buildings, shops and premises”

- o In this presentation we will try to show you how our city treats Disabled people.
- o We will show you the positive and the negative side of our city too.
- o At the end you can come to a conclusion about the general attitude of Greek society towards the Disabled.

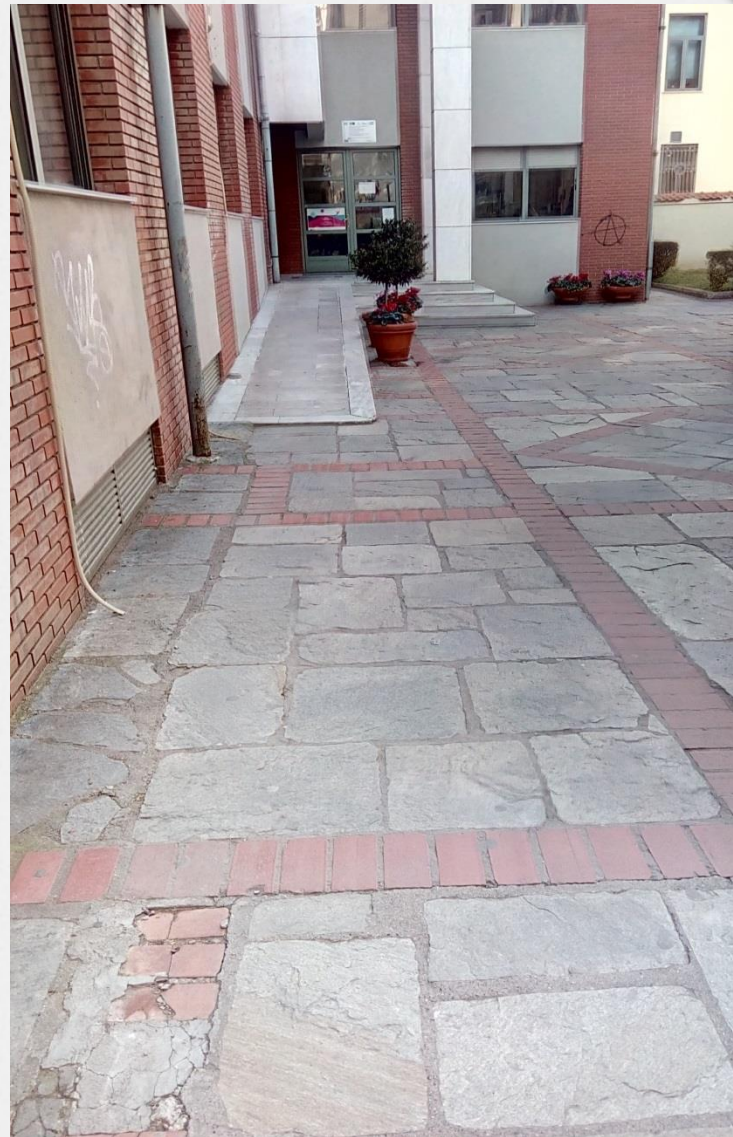


Let's start
from the positive side...

Town Hall

The access for people with disabilities is relatively easy in our Town Hall .

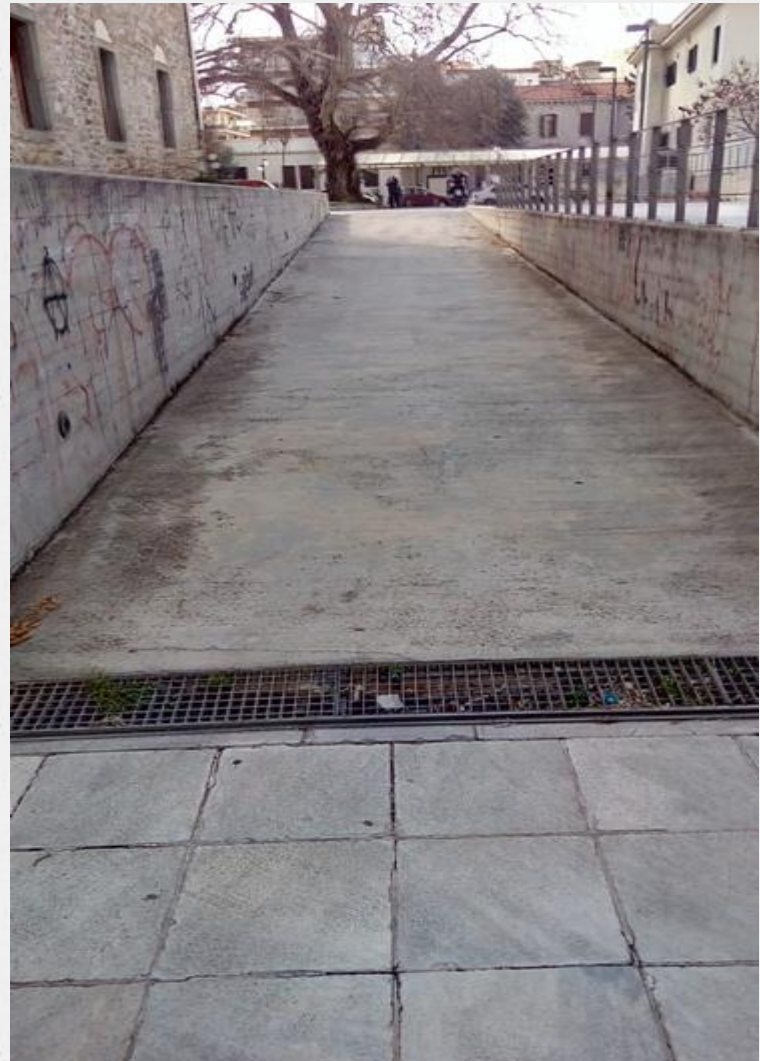
There is a ramp which allows people to move.



Court House

Perhaps, it is the only building that allows access to Disabled people. (except blinds)

It is the newest public building in our city.
(2008)





Inside, there is infrastructure for the Disabled

Court House

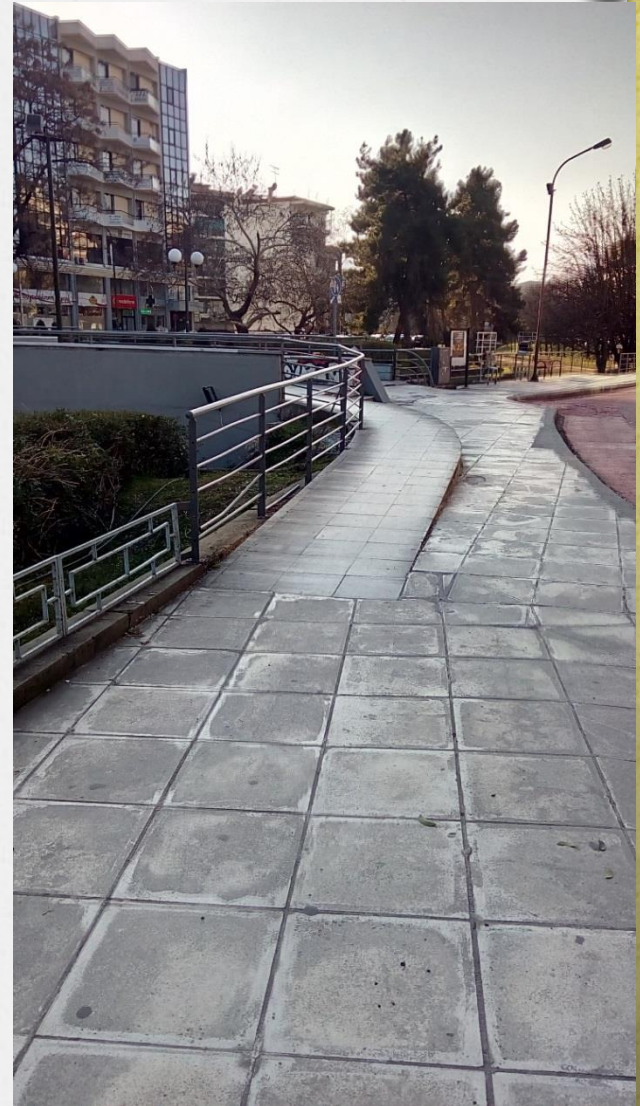


**But only ...
if the Disabled can find the entrance,
because there is no signs anywhere**

.....

Central pedestrian bridge

- o The ramp provides disabled access.
- o Chronologically, it is the last bridge, that was built in town



...and perhaps the only one with a construction prediction for disabled access





Unfortunately it`s time to
see another,
less “attractive” aspect....



Prefecture Building

- o There is a ramp with disabled access at the entrance, but it is in bad condition

Central Bank

- o No provision for disabled access



TELECOMMUNICATIONS ORGANIZATION

o Statistically, the organization serves the biggest part of consumers in the telecommunications sector. (telephony and mobile, Internet facilities)





- o But there is no provision for Disabled at his building.
- o Perhaps the organisation does not have customers with special needs...!

SWIMMING POOL

- o The same situation.
- o Accessible for Disabled People





o ... but not with the best construction specifications

Can the Disabled move to our city?

- o Let`s give you a taste
how easy is it...

Sidewalks Crosswalks





Bad construction
and
dangerous many
times



- o which rather make difficult than facilitate the access and free movement of the Disabled



Pedestrian Bridge: Accessible for Disabled

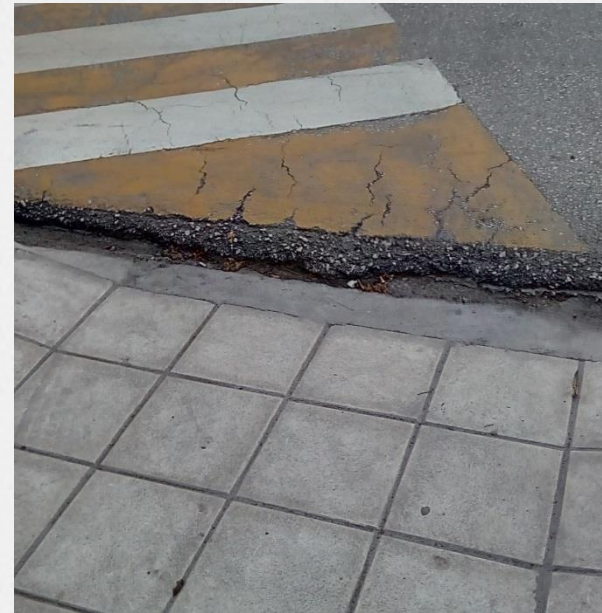


Poor construction, steep incline, not well preserved and repaired...

Almost impossible access



- o Even in the most deliberate constructions, the passage of the Disabled is rather difficult if not impossible.



Damaged sidewalks



Damaged ramps

Traffic lights....



... without sound marking for
blinds

o However, the worst and most disappointed thing is not the bad situation of roads and sidewalks or the architectural boundaries of public buildings,

BUT.....





...the mentality
of
Greek society !!!!!



Could we change this mentality?